



Adapted for Prairie Flower dolls by Beth Webber. Please do not sell

5-8-2010

Combinations Patterns for Prairie Flower Cloth Doll

patterns adapted from *Bleurette* patterns found at www.thebleudoor.com

Please note: I recommend using Adobe Acrobat Reader to print these files. Find the free reader here:

<http://get.adobe.com/reader/otherversions/>

and when printing out the patterns, set the 'Page Scaling' to NONE for the correct scaling of the pattern pieces.

Materials:

- 1/4 yard of lightweight cotton, such as batiste, lawn, or good quality muslin
- 1/4 to 3/8 inch wide lace
- 1/4 button or small snap fastener

Directions:

All seams are 1/4 inch unless otherwise noted

Lay out the pattern pieces lengthwise parallel to the selvage edge of the fabric.

For both sets of combinations, stitch the center back seam from the crotch to the point indicated on the pattern. Press this seam open and continue to press along the fold line indicated on the pattern back.

Finish the back edges by stitching the folded edge down from the neck edge to the center back seam and back up to the neck edge.

For combinations pattern #14, apply lace to the top edges of the front and back to finish the edges. Do this by pinning the lace to the top of the combinations with the lace header 1/16th of an inch below the raw edge of the top. Stitch in place with a straight stitch, then press the lace up with the raw edges pointing to the bottom of the combinations. Zig-zag stitch the lace in place with a narrow zig-zag stitch (on my Viking I use a stitch length of 1.5 and a zig-zag width of 3).

Apply lace to the the armhole edges to finish the edge and to make the shoulder straps as follows: using a continuous piece of lace, begin at the side edge of one armhole front, pin lace along the edge up to the top, leave a 2 inch length of lace and resume pinning lace to one back armhole edge around to the side seam. Apply this lace the same as you did along the top edge. Repeat for the other armhole edge.

Right sides together, sew the front to the back at the crotch seam. Press the seam open and apply lace to the leg edge the same as you did for the top edge.

Right sides together, sew the front to the back at the side seams.

Close the back with a button and thread loop closure or a snap closure.

For combinations pattern #29, with right sides together, sew the front to the backs at the shoulder seams.

Apply lace to the neckline and armhole by pinning the lace header 1/16 of an inch below the raw edge of the neckline and armhole edge. Stitch lace to the combinations with a straight stitch. Press the lace up with the raw edges pointing toward the bottom of the combinations. Zig-zag stitch the lace in place with a narrow zig-zag stitch (on my Viking I use a stitch length of 1.5 and a zig-zag width of 3).

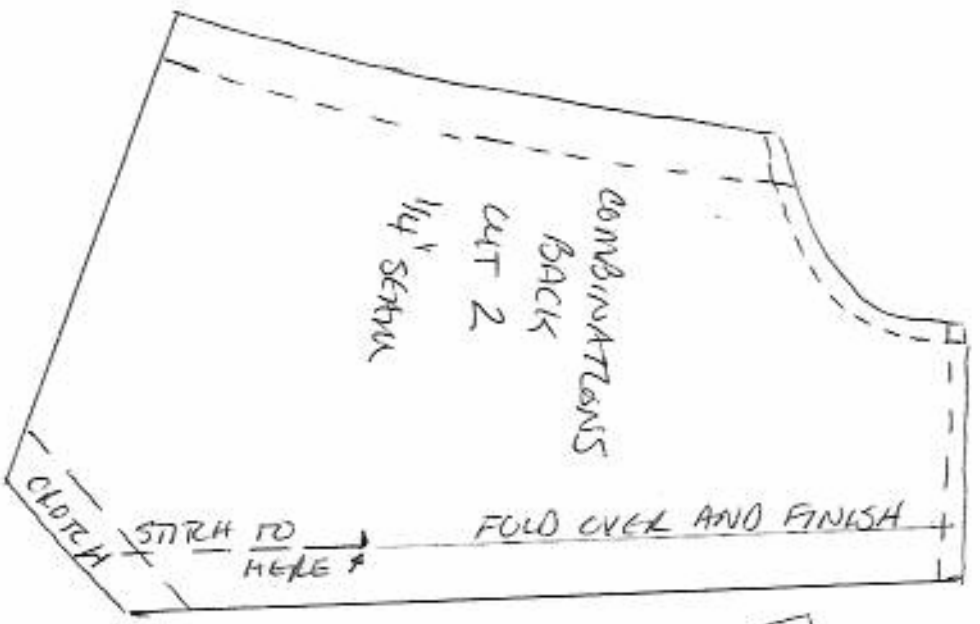
Right sides together, sew the front to the back at the crotch seam. Press the seam open and apply lace to the leg edge the same as you did for the neck and armhole edge.

Right sides together, sew the front to the back at the side seams.

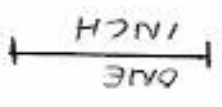
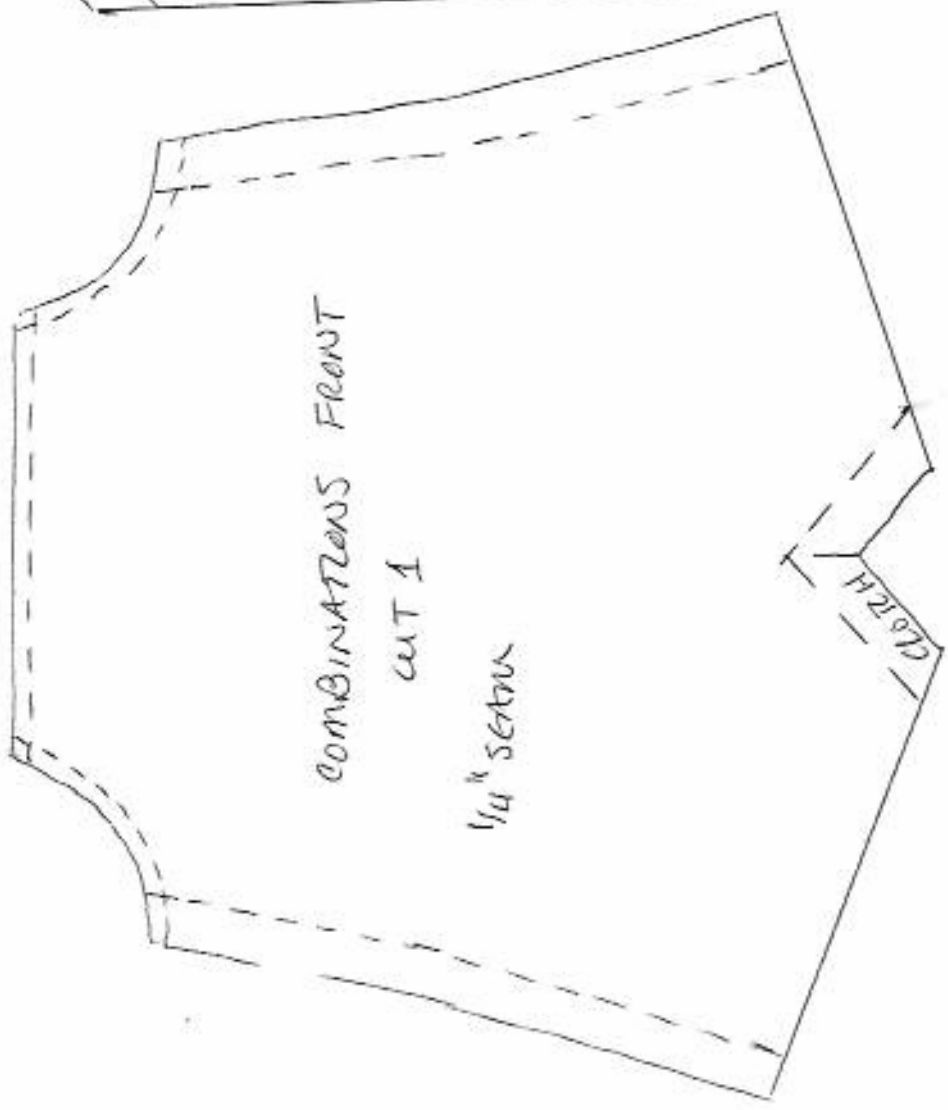
Close the back with a button and thread loop closure or a snap closure.

COMBINATIONS ADAPTED FROM PATTERN #14, 1916, LA SEMAINE DE SUZETTE
 COURTESY OF THE BLEU DOOR.

ORIGINAL



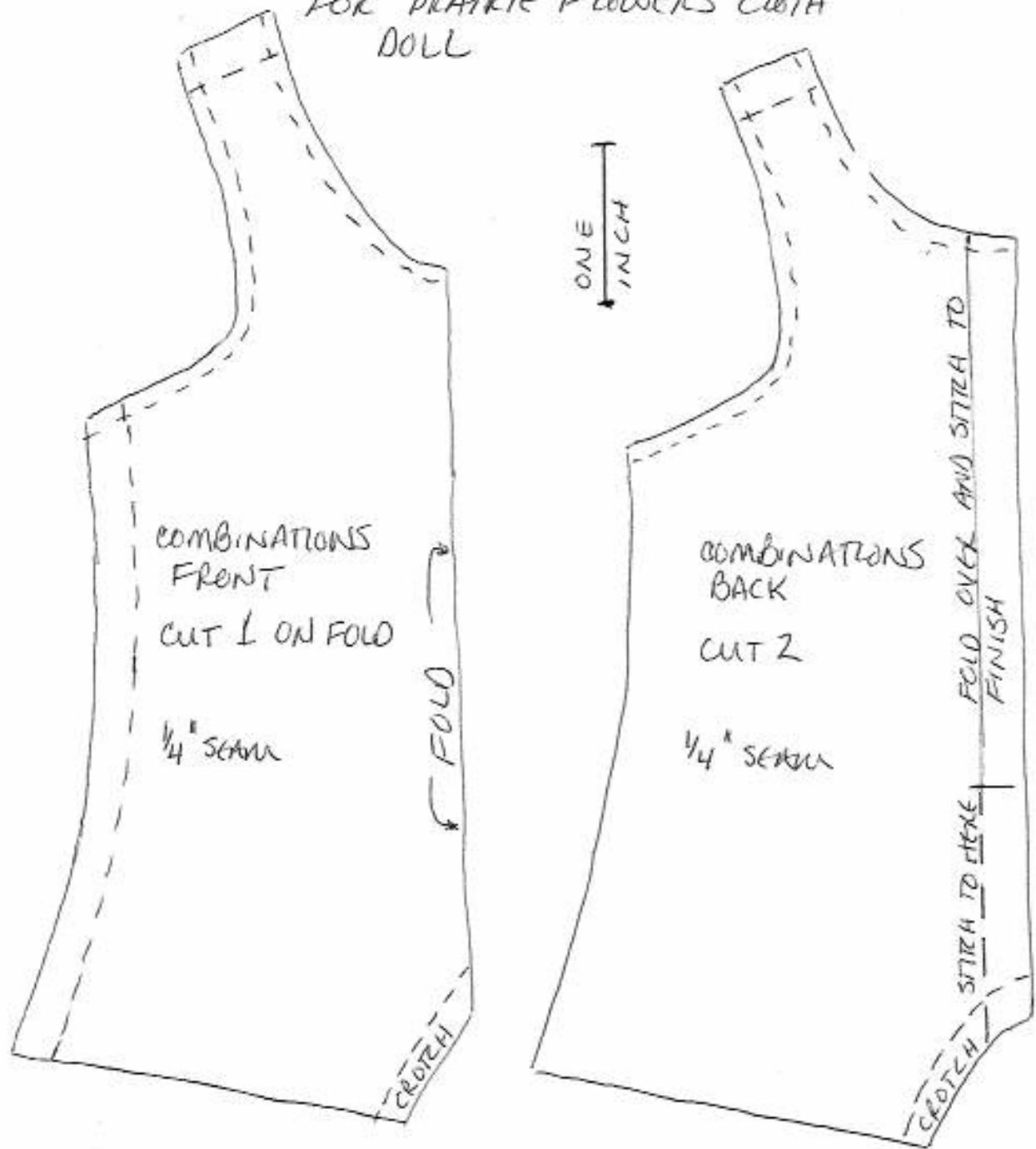
BLEUETTE COMBINATIONS ADAPTED FOR MARIE FLOWERS
 EBERT DOLL



BAD 5-6-2010

BAW 5-6-2010

BLEUETTE COMBINATIONS ADAPTED
FOR PRAIRIE FLOWERS CLOTH
DOLL



COMBINATIONS ADAPTED FROM PATTERN #29, 8-22-1918
LA SEMAINE DE SUZETTE, COURTESY OF THE BLEU DOOR.

STITCH THE SHOULDER SEAM, THEN APPLY LACE TO FINISH
THE NECK AND ARM HOLE EDGES. STITCH THE CENTER BACK
SEAM, WITH RIGHT SIDES TOGETHER STITCH THE CROTCH
SEAM. APPLY LACE TO FINISH THE LEG EDGE, THEN STITCH
THE SIDE SEAMS, CLOSE THE BACK WITH BUTTON AND THREAD
LOOP OR SNAPS