



Adapted for Prairie Flower dolls by Beth Webber. Please do not sell

## Underwear and Camisole for Prairie Flower Cloth Dolls

*underwear pattern adapted from Bleuette patterns found at [www.thebleudoor.com](http://www.thebleudoor.com)*

*Please note: I recommend using Adobe Acrobat Reader to print these files. Find the free reader here:*

<http://get.adobe.com/reader/otherversions/>

*and when printing out the patterns, set the 'Page Scaling' to NONE for the correct scaling of the pattern pieces.*

### Materials:

- 1/4 yard of lightweight cotton fabric, such as batiste, lawn, or high quality muslin
- 1/4 to 3/8 inch wide lace (use a stiff cotton or nylon lace, especially for the straps).
- Embroidery floss
- 1/8 inch elastic
- six 1/4 inch buttons

### Directions:

All seams are 1/4 inch unless otherwise specified.

For both the camisole and underpants it is easiest to apply the lace before the patterns are cut out. Determine how long the fabric needs to be to cut out one camisole and the panties pattern (doubled over). Apply lace to one long edge by pinning the lace header 1/16 inch below the raw edge of the fabric. Stitch with a straight stitch, press the lace up and the header+raw edge down, and zig zag stitch in place (on my Viking I use a stitch length of 1.5 and a zig zag width of 3).

Lay the camisole pattern on the fabric with the lace edge at the bottom. Fold back the remaining fabric and lay the panties pattern on this doubled fabric (right side together) with the lace edge at the bottom. Cut out the patterns.

**For the camisole**, zig zag stitch the remaining three raw edges. Turn under the short edges 1/4 inch, press, and stitch in place. Turn under the top edge 3/8 inch and press.

Cut two lengths of lace or twill tape three inches long for the shoulder straps. Pin in place as noted on the pattern, leaving two inches for the strap. Stitch a button to secure the ends of the straps to the camisole, making sure you catch the strap with the stitches.

Cut two long lengths of embroider floss (or size 10 crochet cotton). Knot one end of each length. Starting at the back edge at the top of the camisole, stitch a neat running stitch to the center front of the camisole. Repeat for the other side. Pull up the stitches to fit around the chest of your doll and tie in a bow.

Stitch two buttons to the back of the camisole and make thread loops on the opposite side.

Adapted for Prairie Flower dolls by Beth Webber. Please do not sell

**For the panties,** mark the crotch cutting line on one side of the panties, but do not cut it yet.

Sew one side seam. Press open.

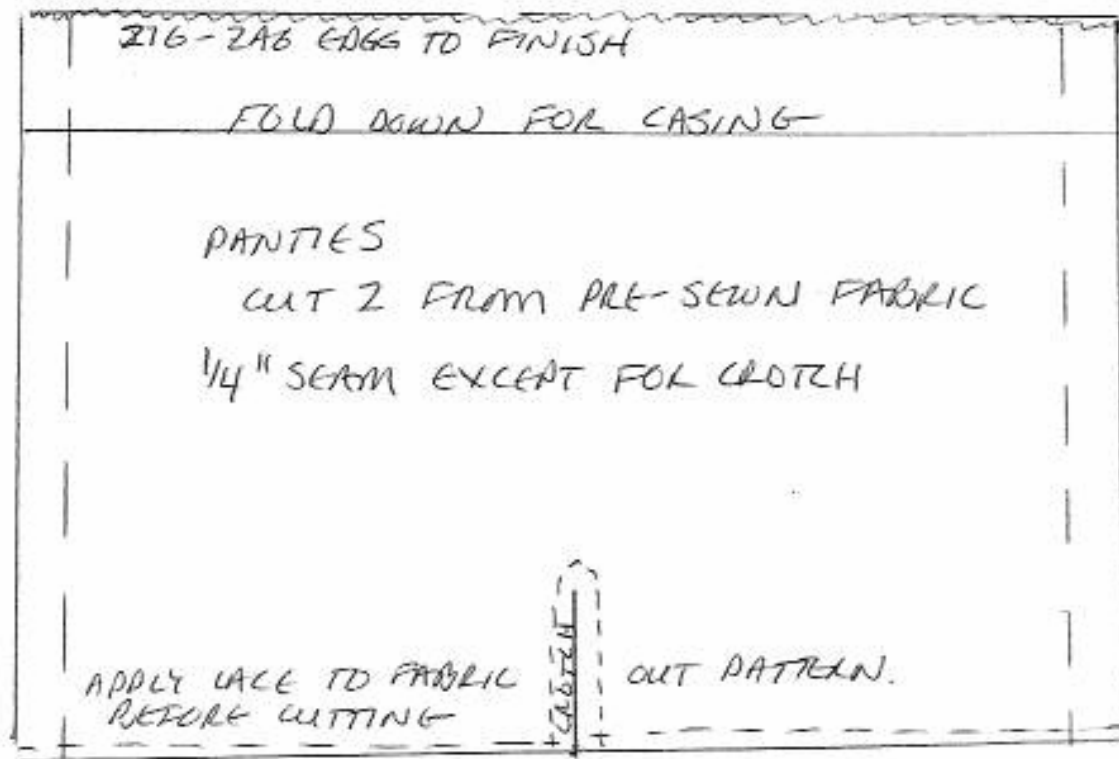
Zig zag stitch the top of the panties, fold over 1/2 inch to the wrong side and press. Stitch 1/8 inch away from the zig zag edge to make a casing for the elastic. Cut a length of elastic that will fit slightly snug around your dolls waist, insert it in the casing with a safety pin. Secure the ends of the elastic with pins so it doesn't get away :-)

Stitch the remaining side seam, catching the elastic at the top in the stitches to secure it.

Stitch the crotch seam as indicate on the pattern with an 1/8 inch seam. Clip the crotch seam just to the stitching, press open.

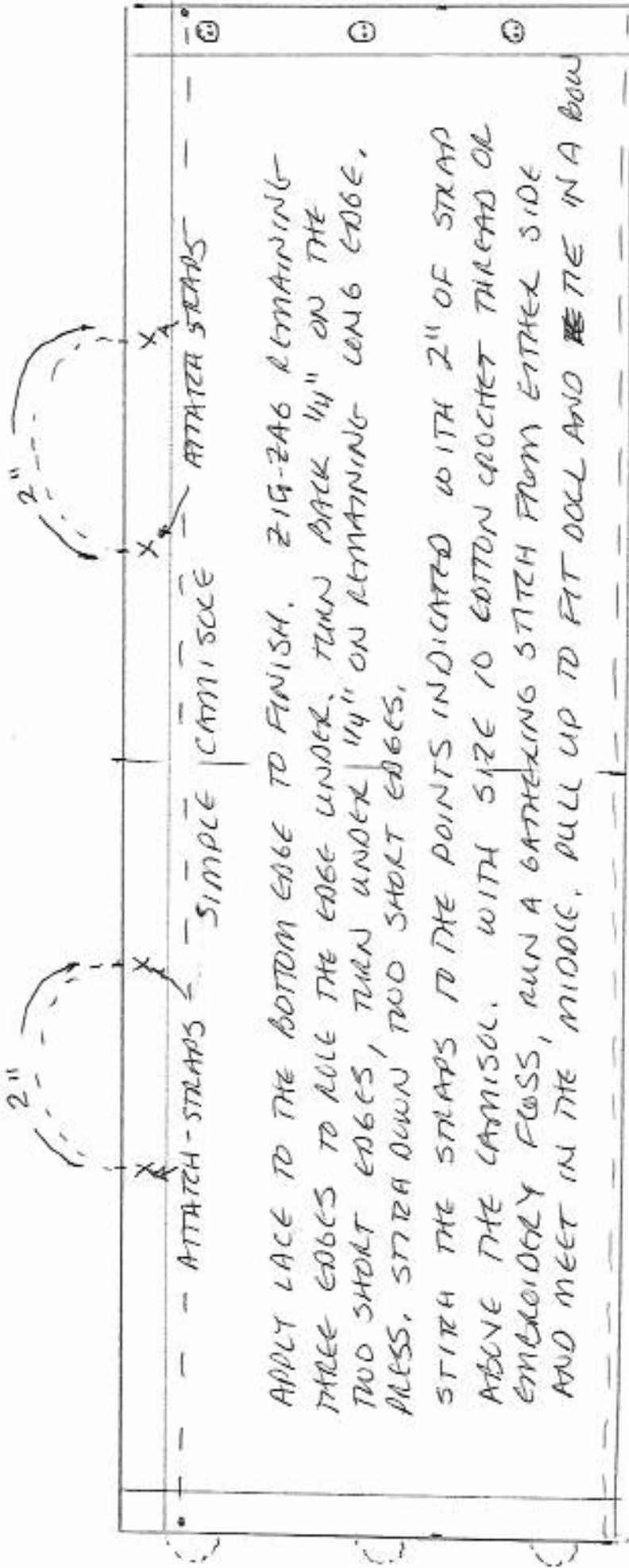
Done :-)

BAW 5-6-2010



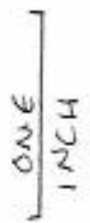
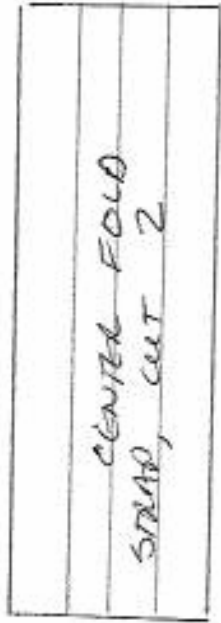
PANTIES ADAPTED FROM "COSTUME DE BAIN",  
SEMAINE DE SUZETTE 7-28-1927, COURTESY  
THE BLEU DOOR.

APPLY LACE TO LONG STRAIGHT EDGE OF FABRIC  
BEFORE CUTTING OUT PATTERN, CUT OUT PATTERN,  
STITCH ONE SIDE SEAM, ZIG-ZAG TOP EDGE THEN  
FOLD ON FOLD LINE FOR CASING, STITCH CASING  
AND INSERT ELASTIC TO FIT SNUG AROUND THE DOLL  
STITCH REMAINING SIDE SEAM AND CROTCH SEAM.  
CLIP TO STITCHING FOR CROTCH.  
CAN BE LENGTHENED TO MAKE PANTS



APPLY LACE TO THE BOTTOM EDGE TO FINISH. ZIG-ZAG REMAINING THREE EDGES TO ROLL THE EDGE UNDER. TURN BACK 1/4" ON THE TWO SHORT EDGES, TURN UNDER 1/4" ON REMAINING LONG EDGE, PRESS. STITCH DOWN TWO SHORT EDGES.

STITCH THE STRAPS TO THE POINTS INDICATED WITH 2" OF STRAP ABOVE THE CAMISOLE. WITH SIZE 10 COTTON CROCHET THREAD OR EMBROIDERY FLOSS, RUN A GATHERING STITCH FROM EITHER SIDE AND MEET IN THE MIDDLE, PULL UP TO FIT DOLL AND TIE IN A BOW



MAKE YOUR OWN STRAPS BY CUTTING TWO PIECES OF FABRIC 3" x 1" FOLD IN HALF LENGTH WISE AND PRESS, THEN FOLD THE RAW EDGES IN TO MEET THE CENTER FOLD. STITCH IN PLACE AS INDICATED ABOVE WITH TWO INCHES OF STRAP ABOVE THE CAMISOLE

CAMISOLE FOR PRAIRIE FLOWER CLOTH DOLL